

# FSO PM-3 CAA



<b>Location</b>	<b>: PM-3 Field Malaysia / Vietnam CAA</b>
<b>Water Depth</b>	<b>: 55 m</b>
<b>Weather Environment</b>	<b>: Infrequent typhoons</b>
<b>Field Operator</b>	<b>: Talisman</b>
<b>Year Built</b>	<b>: 1989</b>
<b>Classification</b>	<b>: ABS</b>
<b>Registration</b>	<b>: Malaysia</b>
<b>In service since</b>	<b>: 17 September 2003</b>
<b>Deadweight</b>	<b>: 116,000 MT</b>

**Tanker Pacific Offshore Terminals Pte Ltd**

1 Temasek Avenue, Millenia Tower #38-01, Singapore 039192  
Phone: (65) 6433 5888, Fax: (65) 6337 5569, Website: [www.tpot.com.sg](http://www.tpot.com.sg)

## Main Dimensions

LOA	: 291 m
Length BP	: 237 m
Moulded Breadth	: 42 m
Moulded Depth	: 20 m

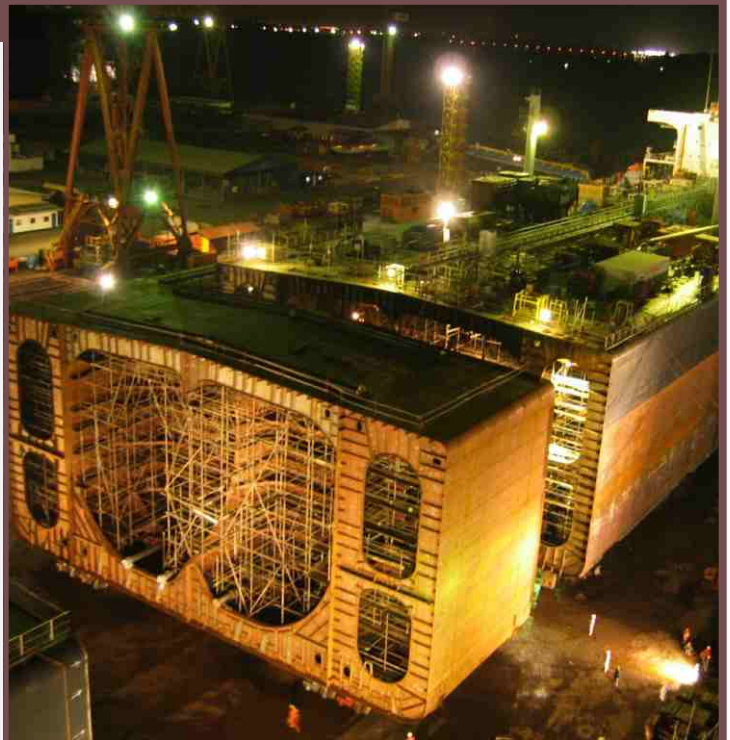
## Basic Design

The vessel's capacity was increased by Jumboization. The Conversion between January and July 2003, included:

- ▲ Fabrication and integration of 15m mid body block to vessel's hull
- ▲ Turret mooring system
- ▲ Second boiler in the engine room
- ▲ Removal of the main engine
- ▲ Fuel burning system for both boilers
- ▲ Cargo heating system
- ▲ Export metering and sampling systems
- ▲ Helideck
- ▲ New turbo generator
- ▲ Life Extension for 20-years design life
- ▲ Accommodation upgrade

## Main Components

Mooring System	: External turret system
Riser System	: 1x10" crude 1x6" fuel gas
Export System	: Tandem
Fuel Gas Burning	: Yes



## Other facilities

Custody	: Turbine
Transfer Meter	
Cranes	: Offshore crane (Electro-hydraulic driven): <ul style="list-style-type: none"><li>- Max. outreach 12m</li><li>- Max. SWL of 10 tons</li><li>- Personnel transfer</li><li>- Electric driven provision crane, SWL 2 tons</li></ul>
Accommodation	: 45
Helideck	: Yes



## Tank Capacities

Crude Storage @ 98%	: 846,468 bbls
Slop Tank	: 13,970 bbls
Ballast Tank	: 224,001 bbls

## Product loading/export

Import swivel	: - 1x10" crude path - 1x6" fuel gas path
Export A Frame	: - Aft to 20" export line